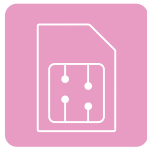


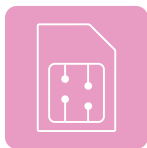
ACTIVATE YOUR DEVICE TODAY

Install Your SIM Card



Keeping Your Existing SIM Card:

If keeping your existing SIM card, move the card from your old phone to your new phone and turn it on.



New SIM card:

If installing a new SIM card, slide your new SIM card into your phone and then call 1-800-SASKTEL to complete the activation process.

Note: eSIM users must visit a SaskTel Store or Authorized Dealer to activate a new eSIM.

Having Issues?



If you are having issues activating your replacement device, please call 1-800-SASKTEL (1-800-727-5835).

To Return a Device:

- Make sure to remove your SIM card and SD card (if applicable) and back up any personal data. Refer to your device's user manual to back up data.
- eSIM users: Please delete your eSIM profile before returning your device.
- iPhone users: Please disable the 'Find my iPhone' app on your non-functioning device or remove it from your iCloud account before returning it to avoid a locked device fee.
- Please place the damaged device in the provided return envelope, attach the included prepaid label, and drop the sealed envelope into any Canada Post mailbox.
- If the damaged device is not returned within 30 days, you will be charged a Non-Return Equipment fee of up to \$300.

About Your Replacement:

- Your replacement device comes with a warranty, please refer to your terms and conditions to confirm the coverage period. If your replacement malfunctions during this time period, please call Likewise Customer Care at 1-877-412-5186 to report the defective unit. Upon approval, you will be shipped a replacement via overnight delivery.
- Please keep the replacement receipt, original box, manual and all packaging materials in a safe place. In the event that you experience problems with your replacement device, you must have these items for future exchanges.

Important Note: Device Protection will appear as the payee on your credit card statement by which you paid your deductible.

Questions about your claim?

Call Likewise Customer Care at 1-877-412-5186

likewise.

SaskTel 